



777 North First Street  
San Jose, CA

**OFFICE AVAILABLE FOR LEASE: 487 – 12,294 SF**

**GLOBAL**  
COMMERCIAL

RALPH LONGO  
408-529-1362  
DRE #01202211

[RLONGO@GLOBALCOMMERCIALPROP.COM](mailto:RLONGO@GLOBALCOMMERCIALPROP.COM)

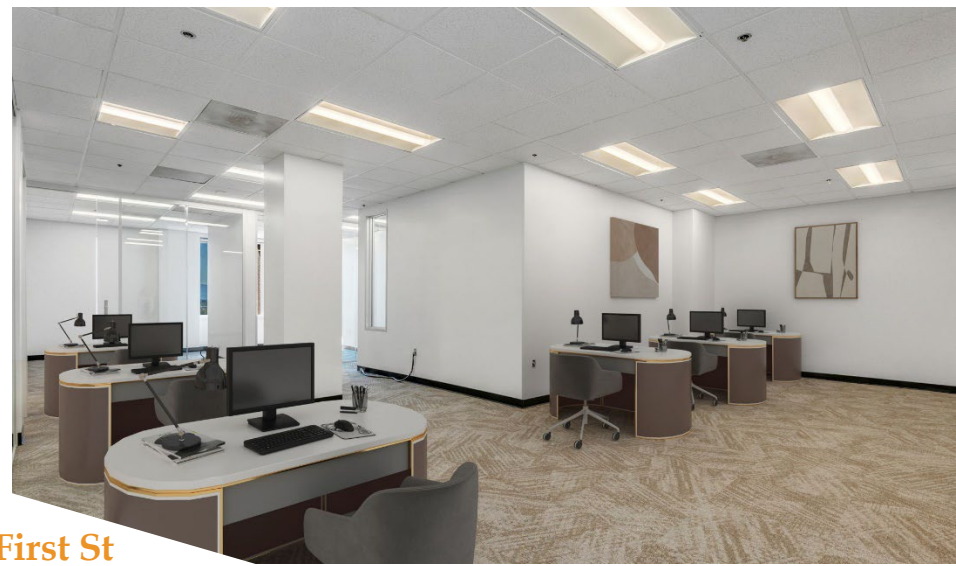
BEN SMITH  
650-521-3474  
DRE #02029926

[BSMITH@GLOBALCOMMERCIALPROP.COM](mailto:BSMITH@GLOBALCOMMERCIALPROP.COM)

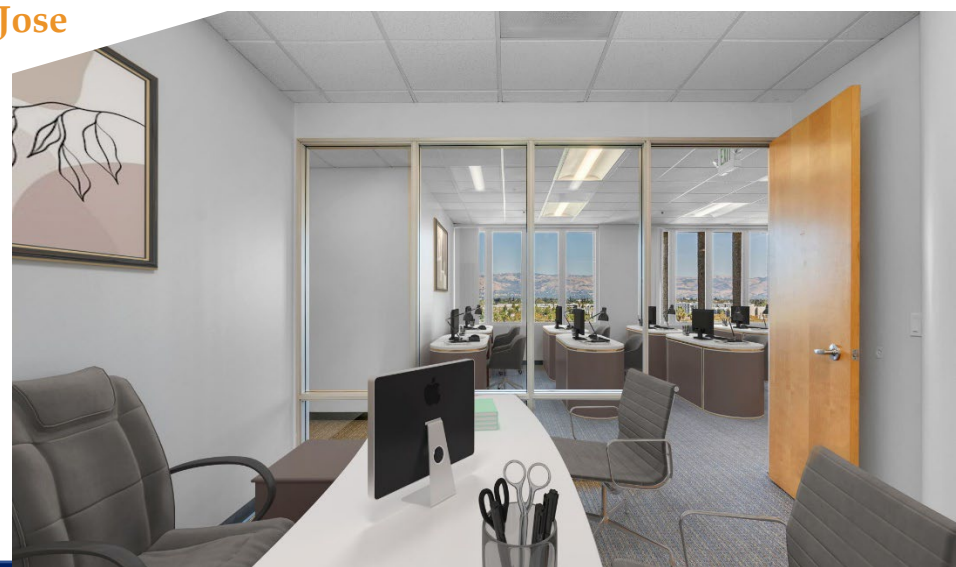
WILL LONGO  
408-529-8110  
DRE #02126991

[BSMITH@GLOBALCOMMERCIALPROP.COM](mailto:BSMITH@GLOBALCOMMERCIALPROP.COM)





777 N First St  
San Jose



**OFFICE AVAILABLE FOR LEASE: 487 – 12,294 SF**

**GLOBAL**  
COMMERCIAL

RALPH LONGO  
408-529-1362  
DRE #01202211  
RLONGO@GLOBALCOMMERCIALPROP.COM

BEN SMITH  
650-521-3474  
DRE #02029926  
BSMITH@GLOBALCOMMERCIALPROP.COM

WILL LONGO  
408-529-8110  
DRE #02126991  
BSMITH@GLOBALCOMMERCIALPROP.COM





## 777 North First Street, San Jose, CA

- Beautiful Office Building
- Multiple Size Options
- Parking 2.5/1000 On-site
- Immediate Access to Light Rail & BayWheels Biking
- Walk to Amenities
- Exterior Signage Potential
- On-site Management
- TI's = Market Ready
- \$2.65 - \$3.00 PSF

### Offering Beautiful Views



**OFFICE AVAILABLE FOR LEASE: 487 – 12,294 SF**

**GLOBAL**  
COMMERCIAL

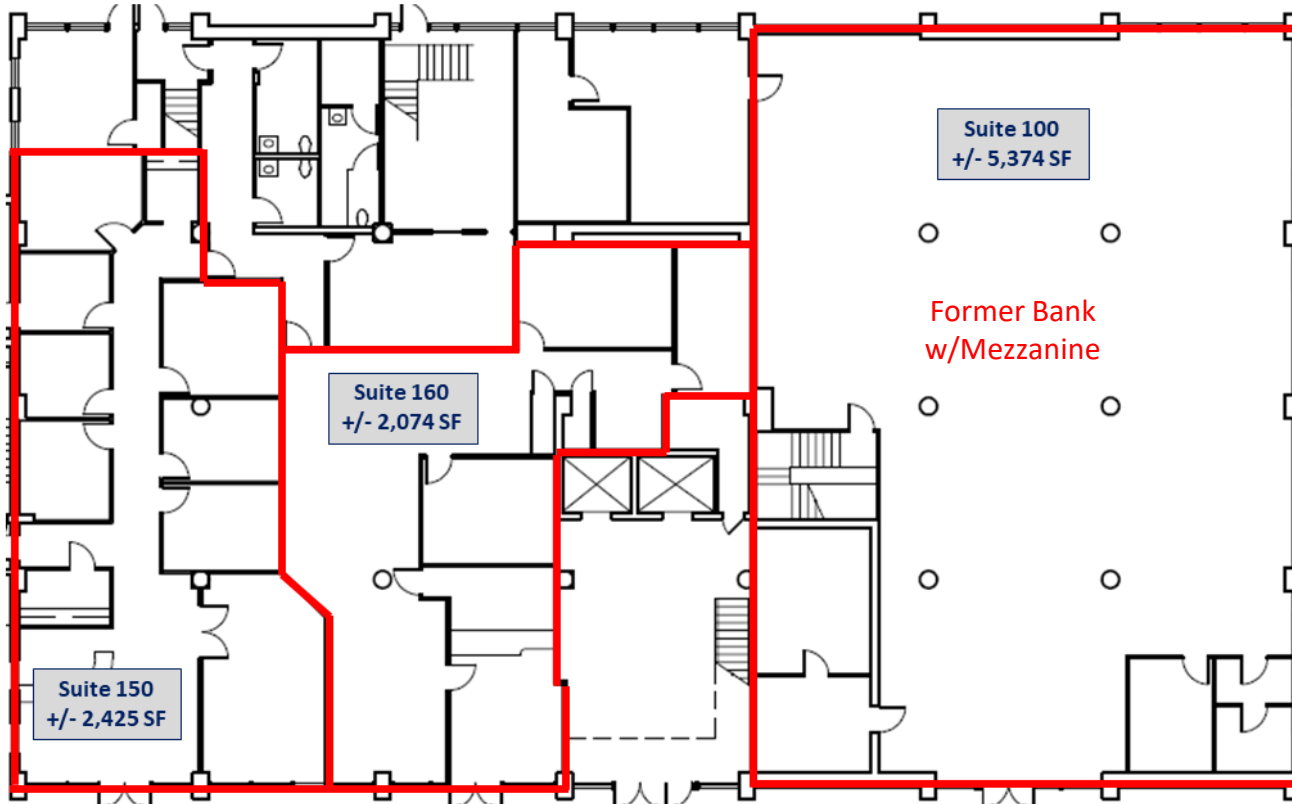
RALPH LONGO  
408-529-1362  
DRE #01202211  
RLONGO@GLOBALCOMMERCIALPROP.COM

BEN SMITH  
650-521-3474  
DRE #02029926  
BSMITH@GLOBALCOMMERCIALPROP.COM

WILL LONGO  
408-529-8110  
DRE #02126991  
BSMITH@GLOBALCOMMERCIALPROP.COM

777 North First Street  
San Jose, CA

Ground Floor



**OFFICE AVAILABLE FOR LEASE: 487 – 12,294 SF**



RALPH LONGO  
408-529-1362  
DRE #01202211  
RLONGO@GLOBALCOMMERCIALPROP.COM

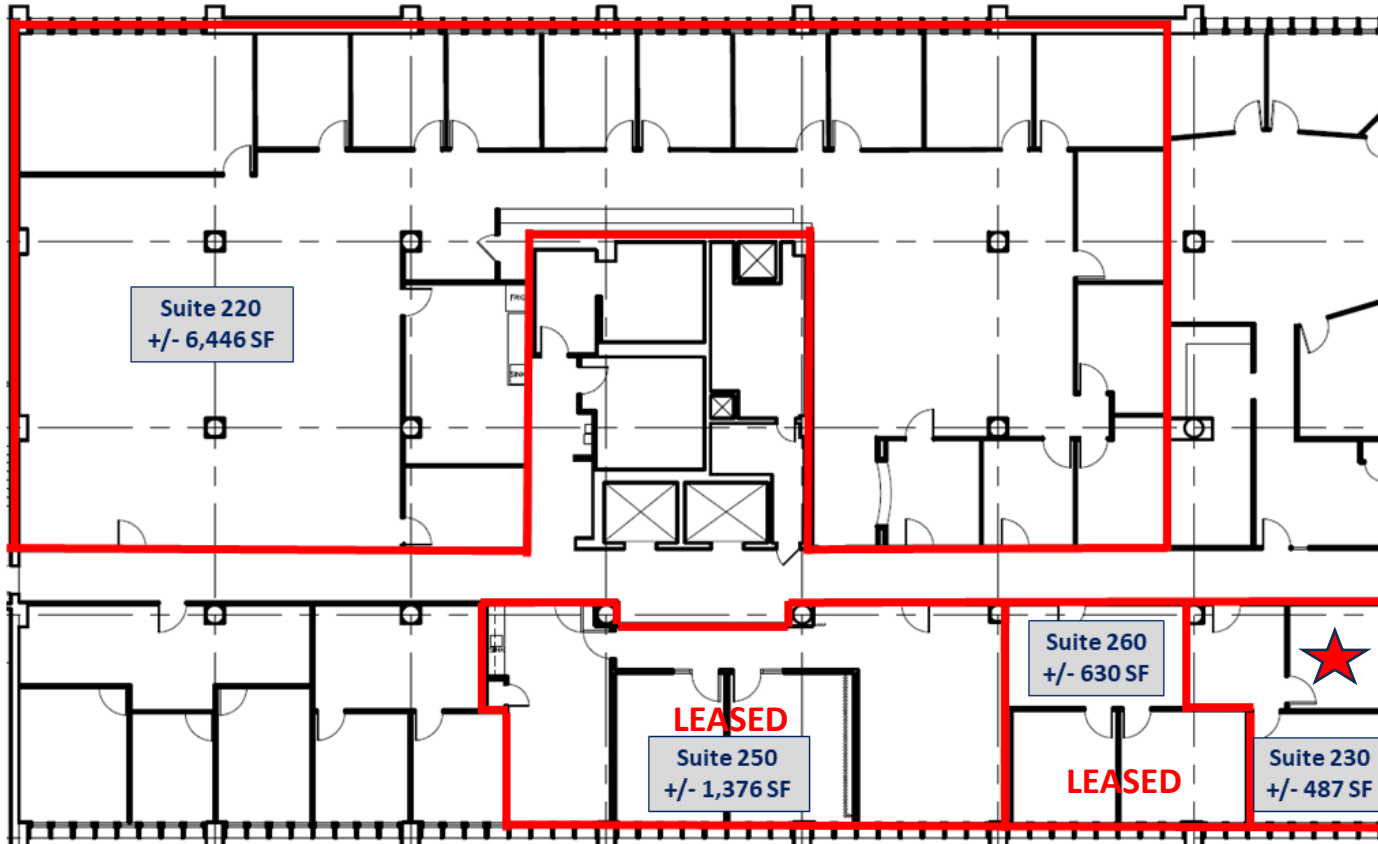
BEN SMITH  
650-521-3474  
DRE #02029926  
BSMITH@GLOBALCOMMERCIALPROP.COM

WILL LONGO  
408-529-8110  
DRE #02126991  
BSMITH@GLOBALCOMMERCIALPROP.COM



777 North First Street  
San Jose, CA

2<sup>nd</sup> Floor



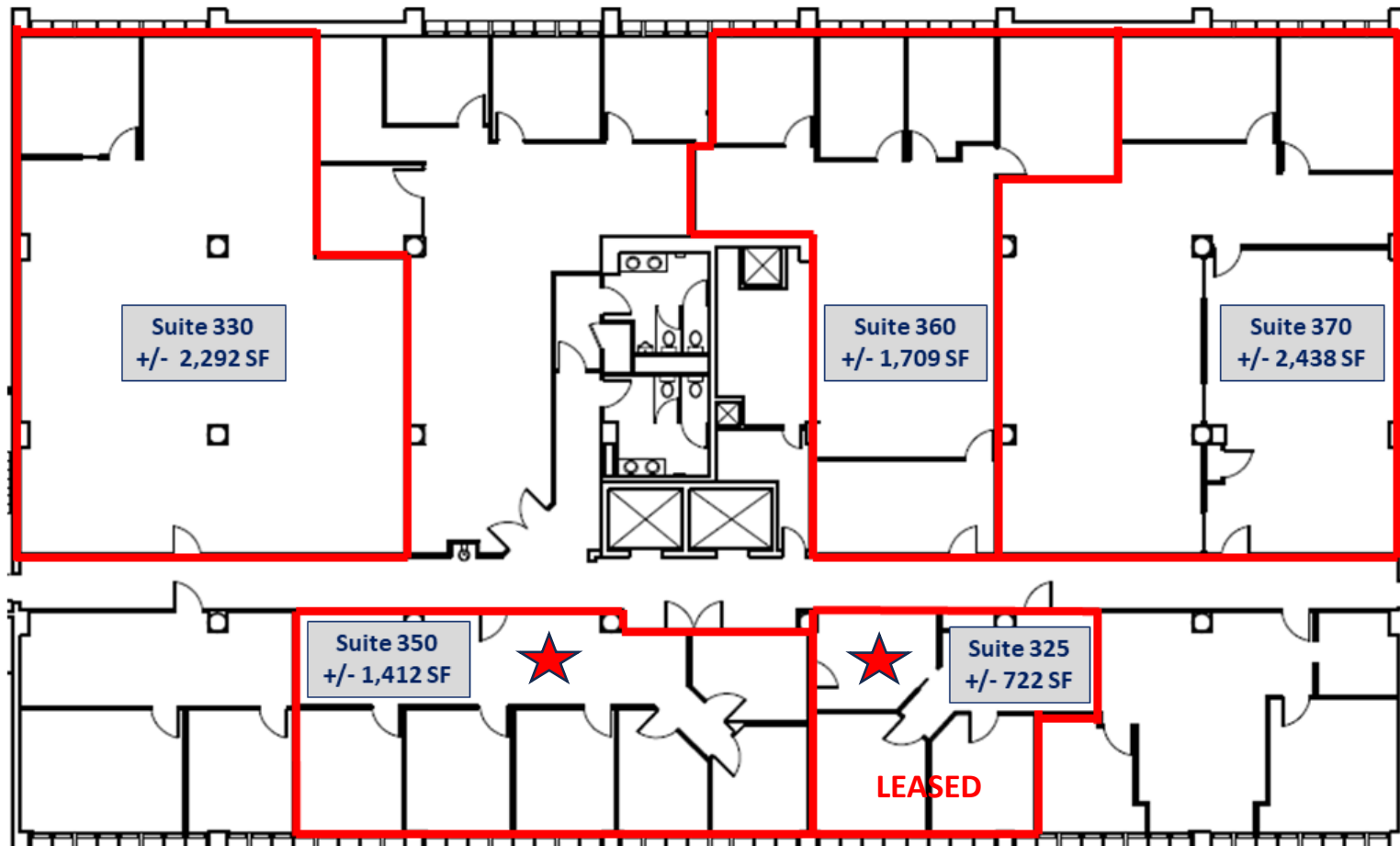
**OFFICE AVAILABLE FOR LEASE: 487 – 12,294 SF**



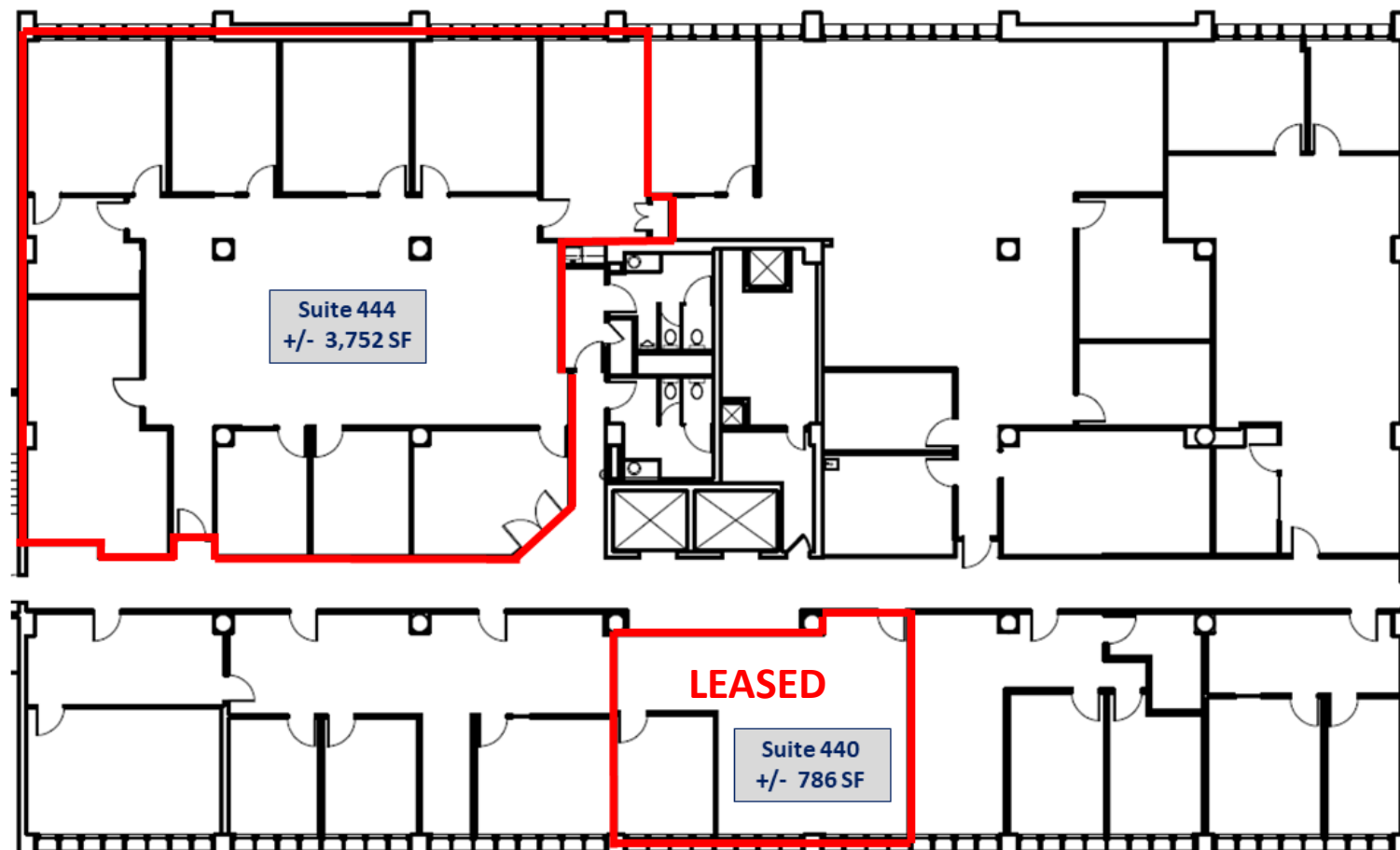
RALPH LONGO  
408-529-1362  
DRE #01202211  
RLONGO@GLOBALCOMMERCIALPROP.COM

BEN SMITH  
650-521-3474  
DRE #02029926  
BSMITH@GLOBALCOMMERCIALPROP.COM

WILL LONGO  
408-529-8110  
DRE #02126991  
BSMITH@GLOBALCOMMERCIALPROP.COM



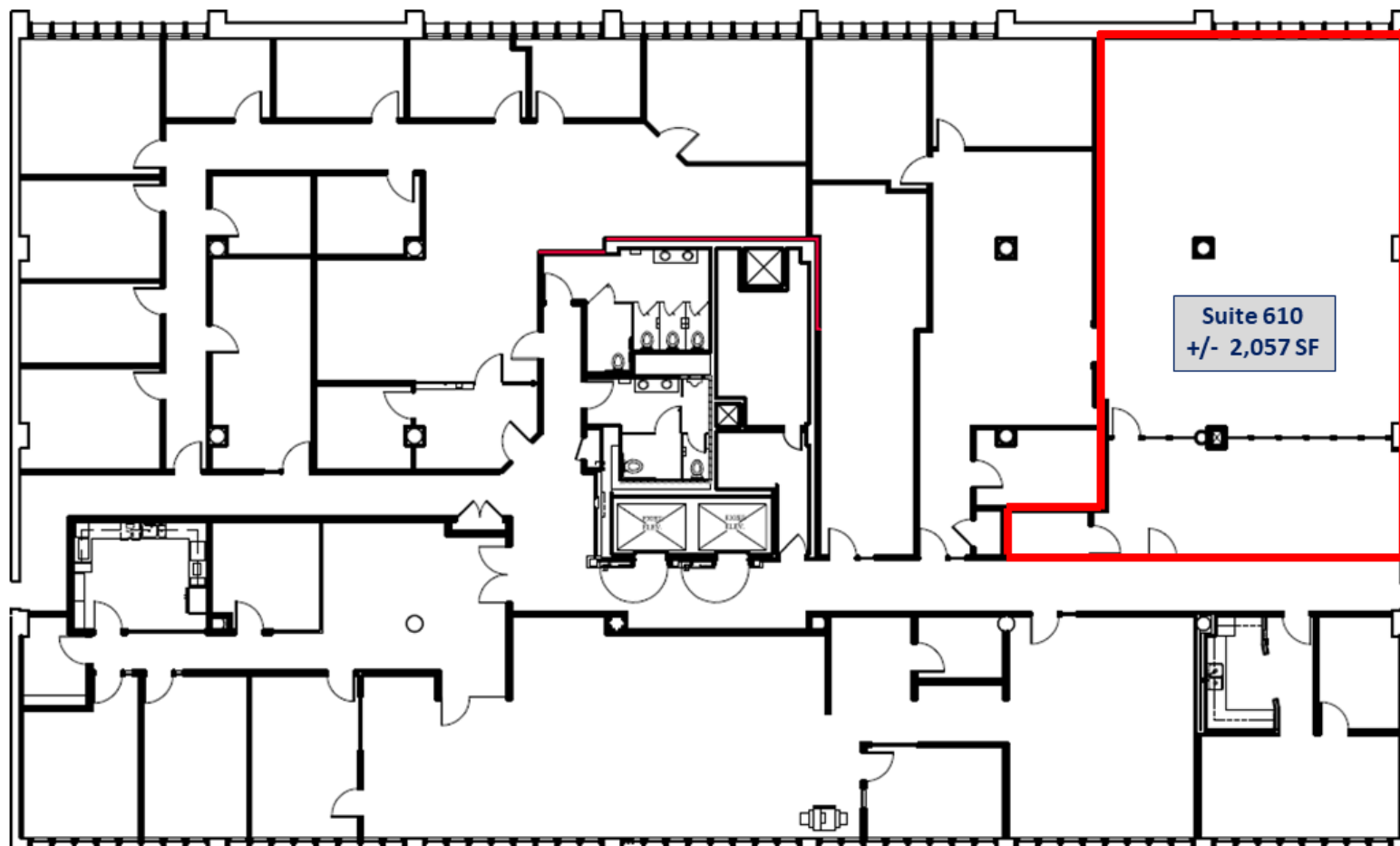
**OFFICE AVAILABLE FOR LEASE: 487 – 12,294 SF**



**OFFICE AVAILABLE FOR LEASE: 487 – 12,294 SF**

777 North First Street San Jose, CA

6th Floor



**OFFICE AVAILABLE FOR LEASE: 487 – 12,294 SF**



RALPH LONGO  
408-529-1362  
DRE #01202211  
RLONGO@GLOBALCOMMERCIALPROP.COM

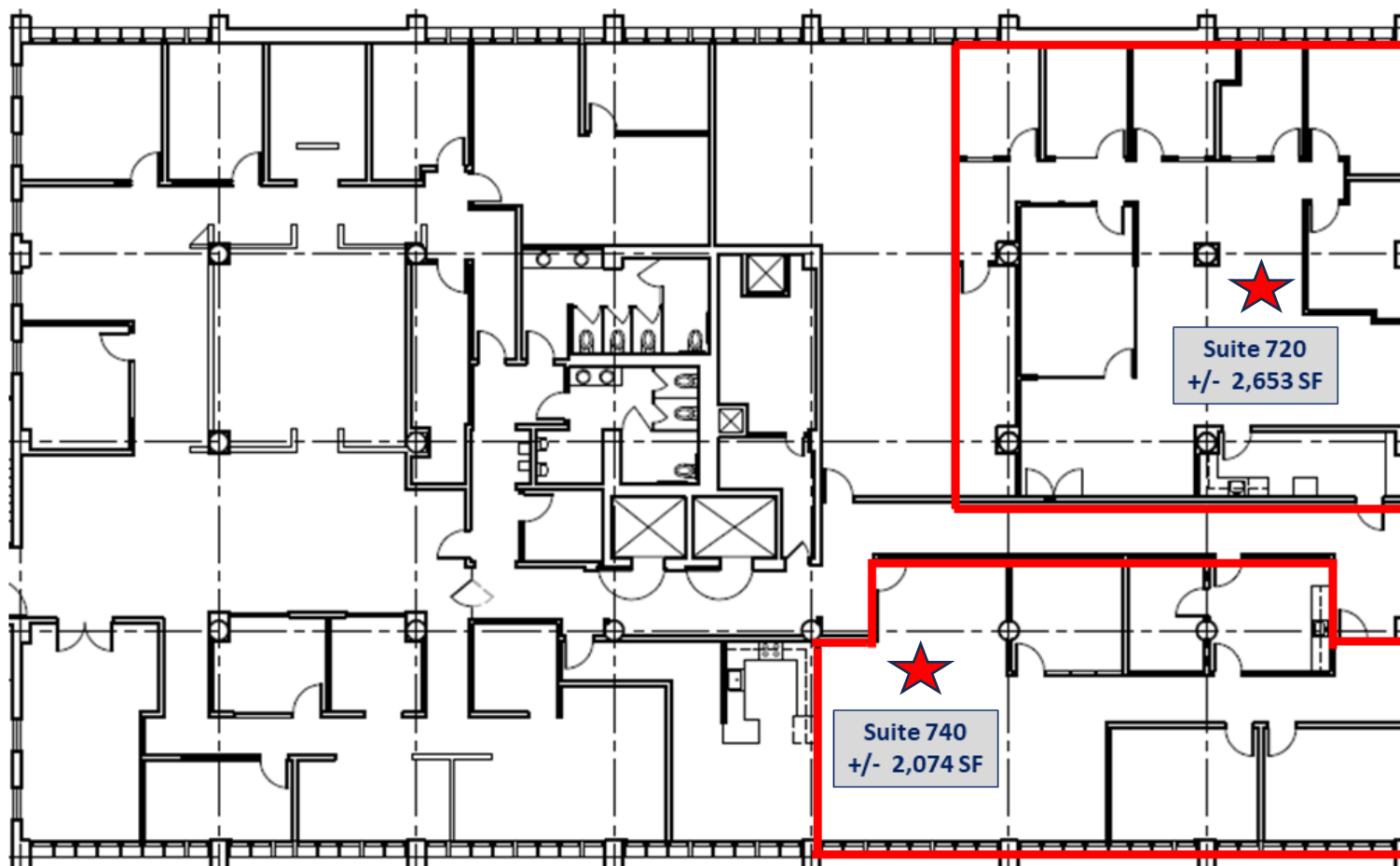
BEN SMITH  
650-521-3474  
DRE #02029926  
BSMITH@GLOBALCOMMERCIALPROP.COM

WILL LONGO  
408-529-8110  
DRE #02126991  
BSMITH@GLOBALCOMMERCIALPROP.COM



777 North First Street San Jose, CA

7th Floor



**OFFICE AVAILABLE FOR LEASE: 487 – 12,294 SF**



RALPH LONGO  
408-529-1362

DRE #01202211  
RLONGO@GLOBALCOMMERCIALPROP.COM

BEN SMITH  
650-521-3474

DRE #02029926  
BSMITH@GLOBALCOMMERCIALPROP.COM

WILL LONGO  
408-529-8110

DRE #02126991  
BSMITH@GLOBALCOMMERCIALPROP.COM

# 777 North First Street San Jose, CA

SF	Suite #	Description	
487	230	Lobby, 2 Privates - Can be combined with suite 260	
<del>630</del>	<del>260</del>	<del>Lobby, 2 Privates</del>	<del>LEASED</del>
<del>722</del>	<del>325</del>	<del>Lobby, 3 Privates, Views</del>	<del>LEASED</del>
<del>786</del>	<del>440</del>	<del>Lobby/Open Space, 1 Private Office, Excellent Views</del>	<del>LEASED</del>
<del>1,376</del>	<del>250</del>	<del>2 Privates, 2 Open Areas</del>	<del>LEASED</del>
1,412	350	6 Privates, 1 Open Space	
1,709	360	Lobby, Open Space w/Kitchenette, 4 Privates	
2,057	610	Lobby, Server/Flex, Open Space - Furniture in place	
2,074	160	Lobby, Open Space, 2 Privates	
2,074	740	4 Privates, Kitchen, Open Area - Beautiful Space with the best views.	
2,292	330	Large Open Space, 1 Private Office	
2,425	150	7 Privates, 1 Conference, Lobby	
2,438	370	Lobby/Open Space, Additional Open Space, 2 Privates	
2,653	720	All Glass, 6 Privates, Conference, Kitchen, Open area.	
3,752	444	8 Privates, Large Open Space, Sink, 2 Exit Doors	
5,374	100	3 Privates, Large Open Space - Mezzanine (2,381 SF)	
6,446	220	Large Open Space, 16 Privates/Flex/Conference, Kitchen/Breakroom	

**OFFICE AVAILABLE FOR LEASE: 487 – 12,294 SF**



RALPH LONGO  
408-529-1362

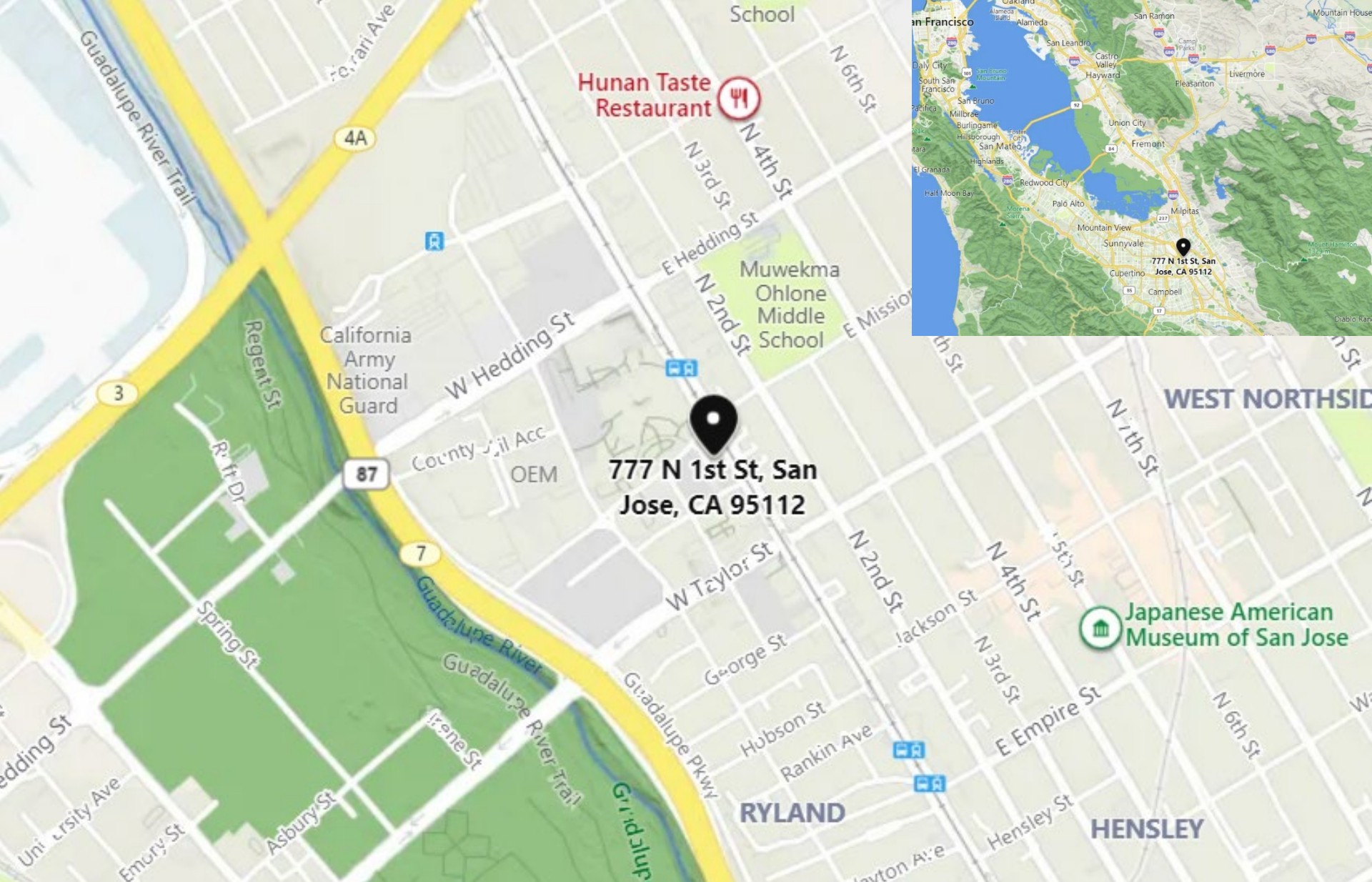
DRE #01202211  
RLONGO@GLOBALCOMMERCIALPROP.COM

BEN SMITH  
650-521-3474

DRE #02029926  
BSMITH@GLOBALCOMMERCIALPROP.COM

WILL LONGO  
408-529-8110

DRE #02126991  
BSMITH@GLOBALCOMMERCIALPROP.COM



Hunan Taste Restaurant



777 N 1st St, San Jose, CA 95112

Japanese American Museum of San Jose

**GLOBAL**  
COMMERCIAL

RALPH LONGO  
408-529-1362  
DRE #01202211  
RLONGO@GLOBALCOMMERCIALPROP.COM

BEN SMITH  
650-521-3474  
DRE #02029926  
BSMITH@GLOBALCOMMERCIALPROP.COM

WILL LONGO  
408-529-8110  
DRE #02126991  
BSMITH@GLOBALCOMMERCIALPROP.COM



# DISCLAIMER

The information contained in the following Marketing Brochure is proprietary and strictly confidential. It is intended to be reviewed only by the party receiving it from Global Commercial Properties, Inc. and should not be made available to any other person or entity without consent of Global Commercial Properties, Inc. This information has been prepared to provide summary and information to prospective purchasers, for the solicitation of interest and is not an offer to sell the property. Only a fully executed Real Estate Purchase Agreement shall bind the property.

The information provided herein is deemed to be accurate and to establish only a preliminary level of interest in the subject property. The information contained herein is not a substitute for thorough due diligence investigation. Global Commercial Properties, Inc. has not made any independent investigation, and makes no warranty or representation, with respect to the present or future use or zoning of the subject property, the future projected financial performance of the property, the size measurements or boundaries of the property and improvements, ADA-related issues or compliance, the presence or absence of contaminating or hazardous substances, PCB's or asbestos, the compliance with State, Federal, County or municipal law, nor the physical condition of the improvements thereon. The information contained in this Marketing Brochure has been obtained from sources believed to be reliable; however, Global Commercial Properties, Inc. has not verified, and will not verify, any of the information contained herein, nor has Global Commercial Properties, Inc. conducted any investigation regarding these matters and makes no warranty or representation whatsoever regarding the accuracy or completeness of the information provided. Prospective purchaser is advised and agrees to make its own investigation and determination regarding all matters affecting the value, condition, utility, size, compliance with Laws, and all aspects of the property's desirability and suitability for purchasers' intentions.

The information contained herein is subject to change without notice and the recipient of these materials shall not look to the Owner or the Broker, Global Commercial Properties, Inc., or any of their officers, employees, representatives, independent contractors or affiliates, for the accuracy or completeness thereof.

Property will be shown by appointment only.